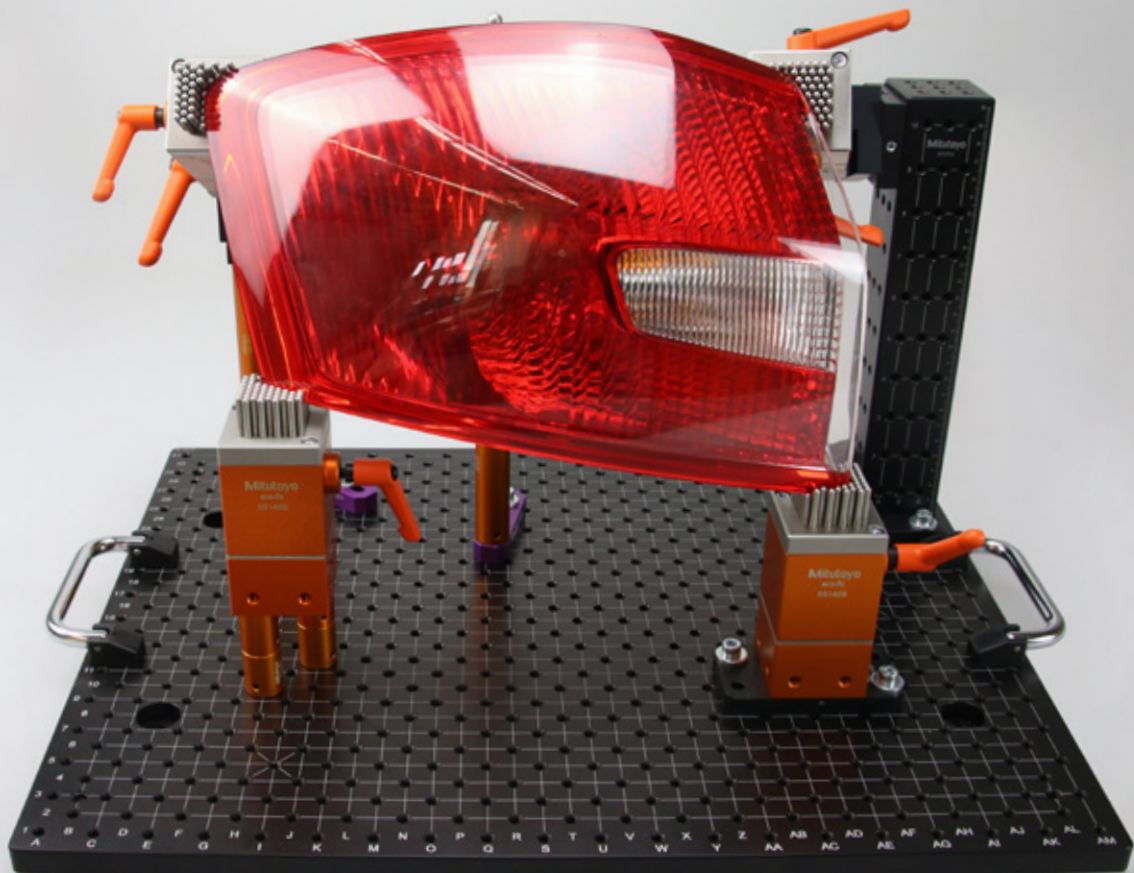


# PinFlex Shape Clamping System

MADE IN GERMANY



Fixturing solutions

# PinFlex - Series

## PRODUCT LINES

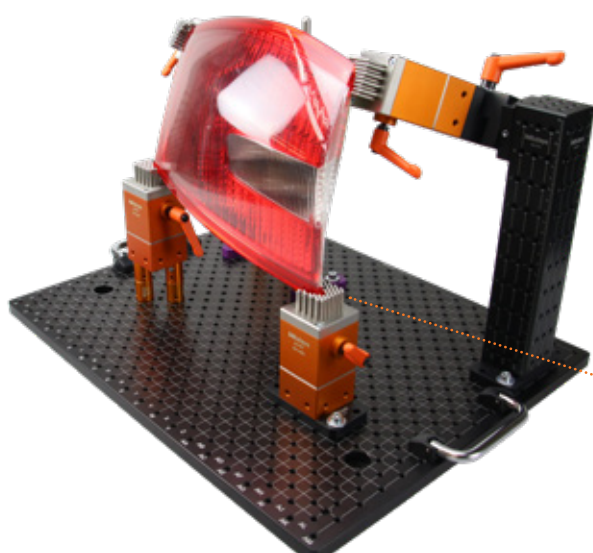
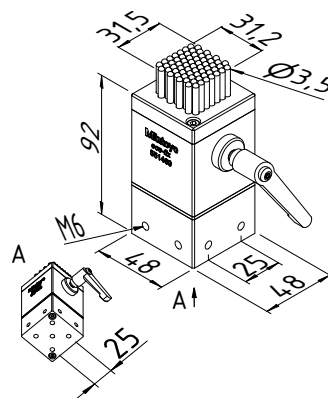
eco-fix

**Part No.: K551469**

Weight 1.000 g

### Shape clamping system

Adjust the pins to the component's shape just by pressing it on the released pins. Secure the adapted shape by using the clamping handle. Combine as many Pinflex clamps as required.



Maximum load up to 80 kg when all pins are in use. Please make sure that the workpiece is stably fixed before you let it go.



## Three ways to attach the PinFlex shape clamp K551469

1. Swivel joint K551423 is attached with 4x mounting bolts (included)
2. Mounting plate K551470 is attached with 4x K550110 cylinder head screw M6 20 mm.  
Attach to any eco-fix base plate with 4x K550110 cylinder head screw M6 20 mm.
3. Location pin  $\varnothing$  20 mm K551043 or height adjustable (54 - 70 mm) location pin  $\varnothing$  20 mm K551418 with connector pin K550335-10. Attach the connector pin to the M6 threads at the PinFlex bottom.



1 K551423



2 K551470



3 K551043

## The shape clamping solution for free-form shaped components

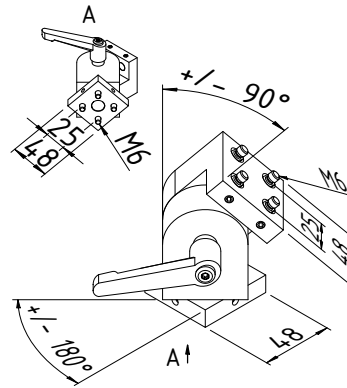
## PRODUCT LINES

**Part No.: K551423**

Weight 1.100 g

## Swivel joint for mounting and positioning of K551469 PinFlex

Easily adjust the rotational and angular position of **K551469**  
Secure the position with the clamping handle.  
Mounting materials included.

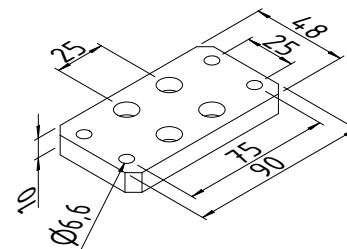


Part No.: K551470

Weight 18 g

## Mounting plate for K551469 PinFlex

Mount the PinFlex free form clamp  
to an eco-fix base plate or similar.  
8x K550110 cylinder head screw  
M6 20 mm required.

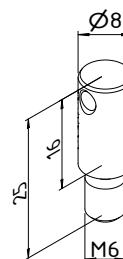
eco-fix  
eco-fix<sup>plus</sup>

**Part No.: K550335-10**

Weight 25 g

### Pin connector ø 8 mm eco-fix<sup>plus</sup>

For attachment to the  
PinFlex bottom threads.



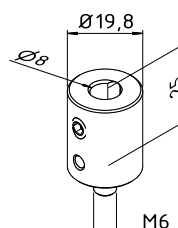
eco-fix

Part No.: K551043

L = 25 mm Weight 19 g

**Location pin ø 20 mm**

With bore  $\varnothing$  8 mm for  
attaching K50335-10  $\varnothing$  8 mm  
pin connector.



eco-fix

Coordinate Measuring Machines



Vision Measuring Systems



Form Measurement



Optical Measuring



Sensor Systems



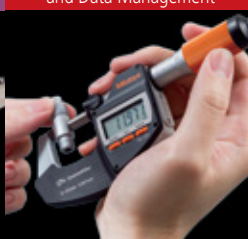
Test Equipment and Seismometers



Digital Scale and DRO Systems



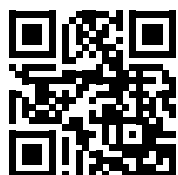
Small Tool Instruments and Data Management



**Whatever your challenges are,  
Mitutoyo supports you from start to finish.**

Mitutoyo is not only a manufacturer of top-quality measuring products, but also one that offers qualified support for the lifetime of the equipment backed up by comprehensive services, ensuring your staff can make the very best use of the investment.

Apart from the basics of calibration and repair, Mitutoyo offers product and metrology training, as well as IT support for the sophisticated software used in modern measuring technology. We can also design, build, test, and deliver bespoke measuring solutions and even, if deemed cost-effective, take your critical measurement challenges in-house on a sub-contract basis



**Find additional product literature  
and our complete catalog here.**

[www.mitutoyo.eu](http://www.mitutoyo.eu)

# Mitutoyo

**Mitutoyo Europe GmbH**

Borsigstraße 8-10

41469 Neuss

Tel. +49 (0) 2137-102-0

[info@mitutoyo.eu](mailto:info@mitutoyo.eu)

[www.mitutoyo.eu](http://www.mitutoyo.eu)

**Note:** All information regarding our products, and in particular the illustrations, drawings, dimensional and performance data contained in this printed matter as well as other technical data are to be regarded as approximate average values. We therefore reserve the right to make changes to the corresponding designs, dimensions and weights. The stated standards, similar technical regulations, descriptions and illustrations of the products were valid at the time of printing. In addition, the latest applicable version of our General Trading Conditions will apply. Only quotations submitted by ourselves may be regarded as definitive.